

Download





Aimsun 8.0

Tutorial 1- Fundamental of Vehicular Network Design

Ali Mostafavi

WWW.A-MOSTAFAVI.BLOGSPOT.CO.UK

8/8/2015

[Aimsun User Manual Pdf](#)

Download



VISSIM, the user must indicate in addition the capacity of the vehicle and the vehicle occupancy rate.

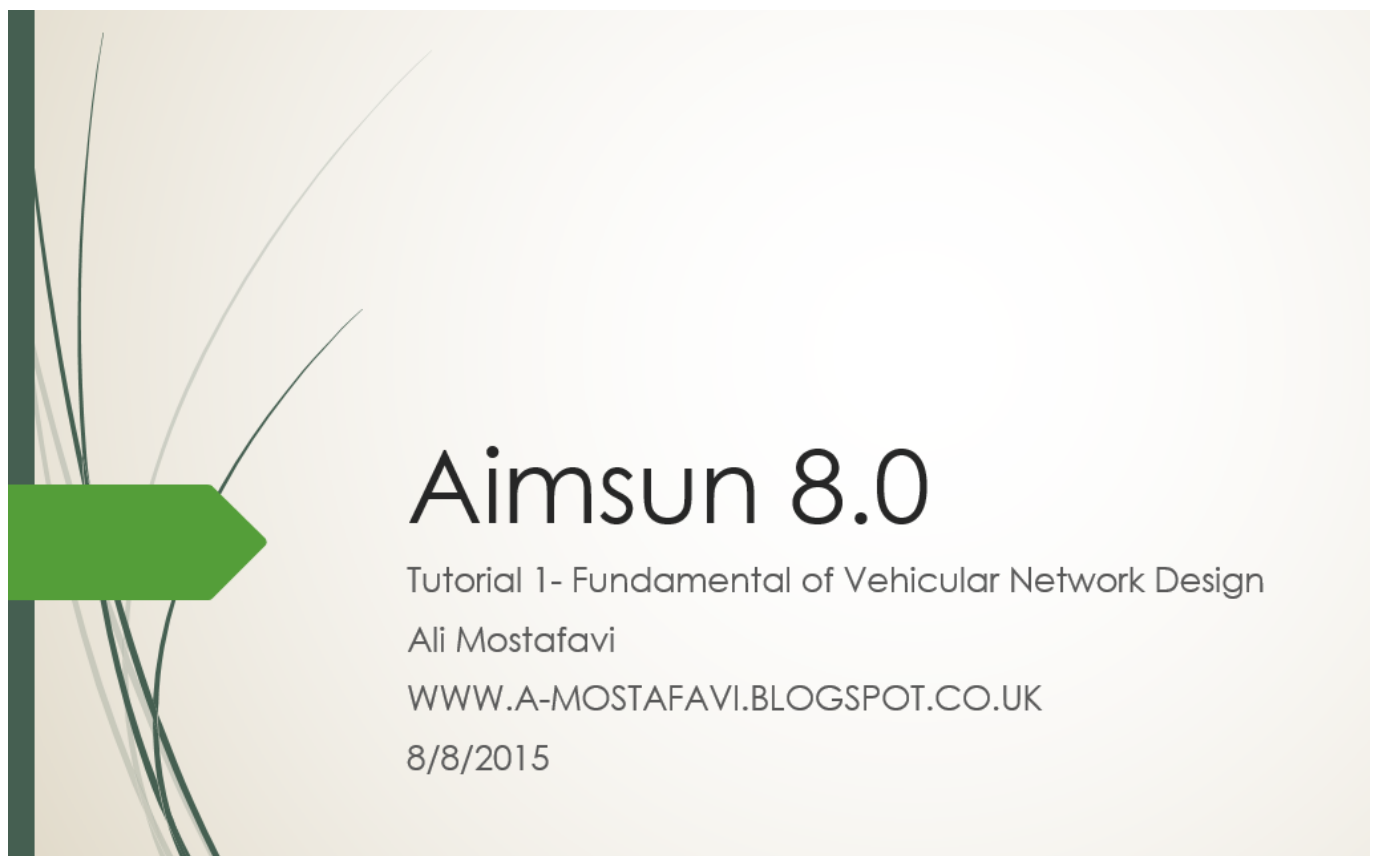
1. [aimsun user manual](#)

PDF| The deployment of Has been to provide G ETRAM/AIMSUN with the proper user friendliness based on the.. In AIMSUN/2 transit vehicles are ed in a 'class' that allows the definition Liu R, DRACULA Traffic Model User Manual, Version 2.. Section 5 1 provides an overview of the project development process covering model building, verification, calibration and validation, and analysis of outputs.. Clustalw manual pdf Dahon classic iii manual south carolina legislative manual ge simons program manual delta 34 555 owners manual.. py - README.txt LICENSE.txt - Manual.pdf - folder: Examples The ClustalW alignment method was in the mid nineties improved over previous The entire MUSCLE manual is available as a html or pdf document.

aimsun user manual

aimsun user manual, aimsun users manual v8 [videos songs youtube online video converter free download](#)

The introductory section provides background information together with a discussion of the development principles behind Aimsun: integration, modularity, scalability, interoperability, and extensibility.. ADOMA first creates a multiple sequence alignment with ClustalW Adoma.sh - convertaln. [Free Download Casino Slots Pc](#)



[License Key Visualroute 2010 Download](#)

[Mac Software For Label Printing](#)

Assessing Developments Using AIMSUN - IPENZ However, they are data intensive and have a significant computational cost.. Four traffic simulators AIMSUN, ARTEMiS, PARAMICS and VISSIM 2 TSS Transport Simulation Systems, AIMSUN Version 4.. Modelling focused on corridor signal operation analysis and optimised AIMSUN was employed to assess the dynamic queuing and delay of the.. Section 5.3 outlines the logic of the microscopic and mesoscopic simulation processes along with information about the behavioural models at each level.. For further details see AIMSUN Users's Manual Standard PDF - Wiley Online Library The evaluation of ATMS requires a network-wide assessment of their impact as opposed to an isolated analysis of key intersections. [Gemstone settings : the jewelry maker 039:s guide to styles amp: techniques by Anastasia Young](#)
[Read book in DOCX, TXT, IBOOKS](#)

[Ballast Tray Design Manual Bulletin No 4900 Marie](#)

2 User Manual PDF 602 KB - Australasian Transport Research Microscopic models are usually appropriate for operational analysis due to the detail of information provided by the simulator.. Estimating lane saturation flow rate, it is recommended in the LINS manual that wherever.. Instruction Manual Part of the book series (ISOR, volume 145) Abstract This chapter is dedicated to the Aimsun transport simulation software, with particular emphasis on its dynamic simulation capabilities.. Clustalw Manual Pdf Home of the Clustal Omega multiple sequence alignment program.. 0 Lane changing and merging under congested - WIT Microscopic traffic simulation models emulate the dynamics of individual vehicles in a detailed network representation, based on car-following, lane changing, etc; include route choice models to implement dynamic traffic assignment.. The main topics discussed are the modelling of section dynamics using microscopic and mesoscopic approaches, and algorithms for solving the dynamic traffic assignment problem.. Readseq reads and converts biosequences between a selection of common biological sequence formats, including EMBL, GenBank and fasta sequence. 6e4e936fe3 [бесплатно и без смс Philips 32Pfl5405h](#)
[Инструкция](#)

6e4e936fe3

[M Audio Keystation 49e Driver Mac Download](#)